

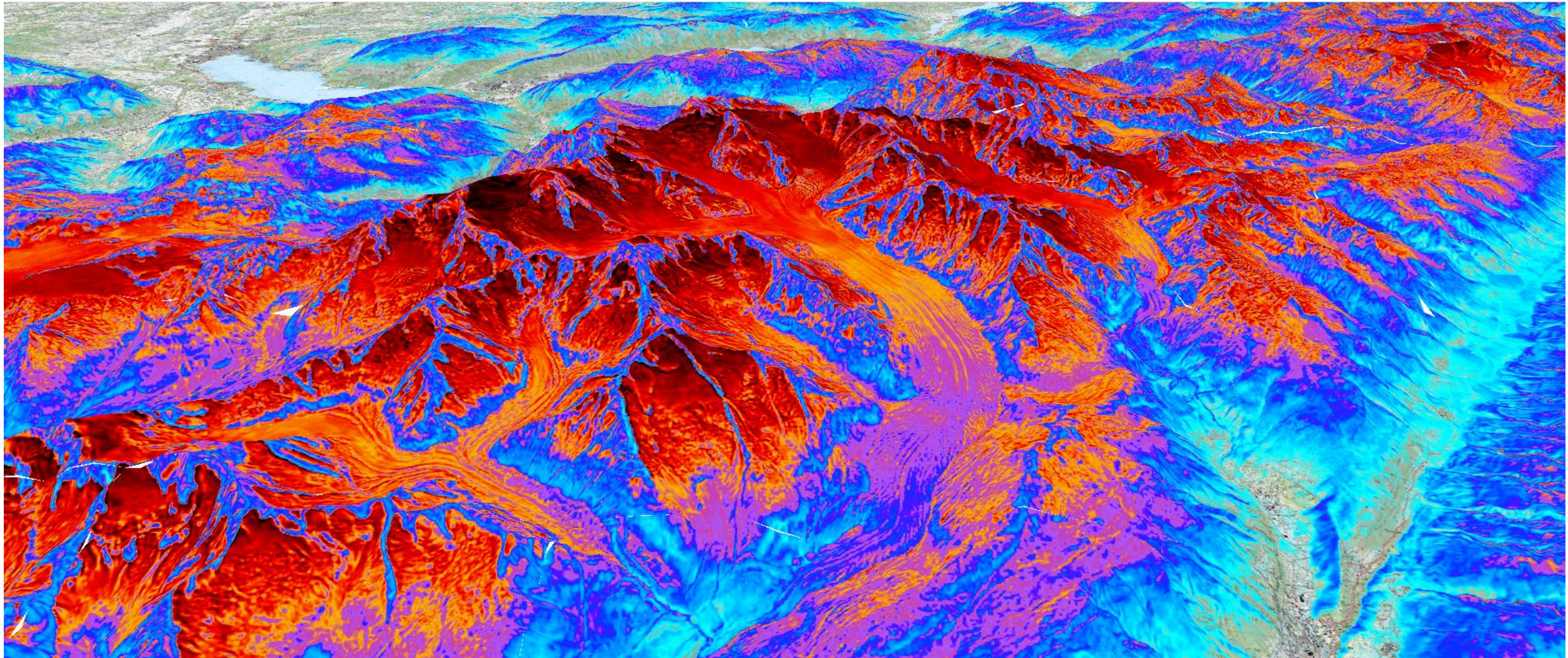


ExoLabs

Next-Generation Snow Products

hendrik.wulf@exolabs.ch

Mapped or Modelled?



Snow depth

1 cm

50 cm

100 cm

200 cm

300 cm

500 cm

ExoLabs' snow department

ExoLabs



Hendrik

Gillian

Bernhard

Reik

Satellite data stream



Optical high-resolution (4 Satellites)

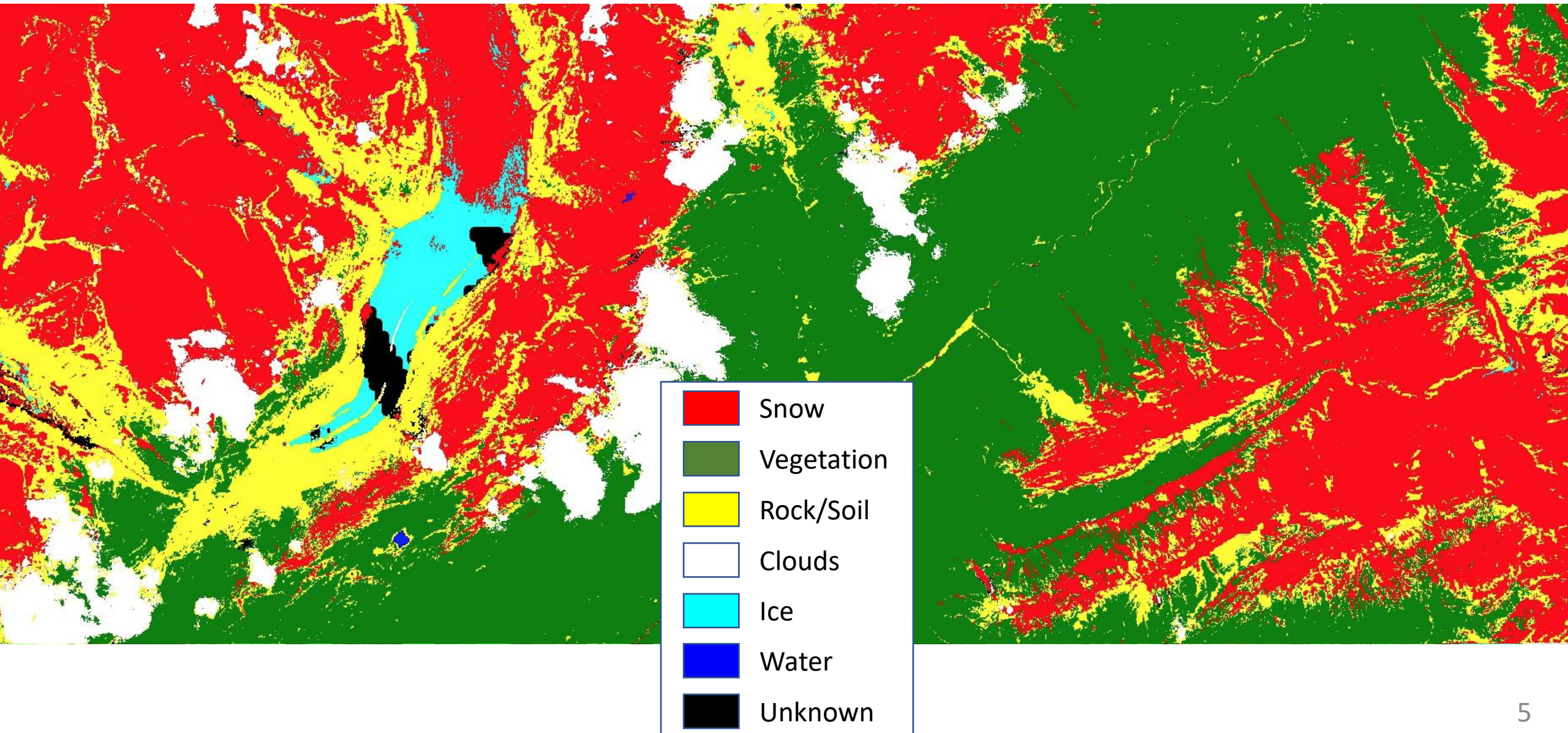
- *Sentinel-2 A/B*
- *Landsat 8/9*



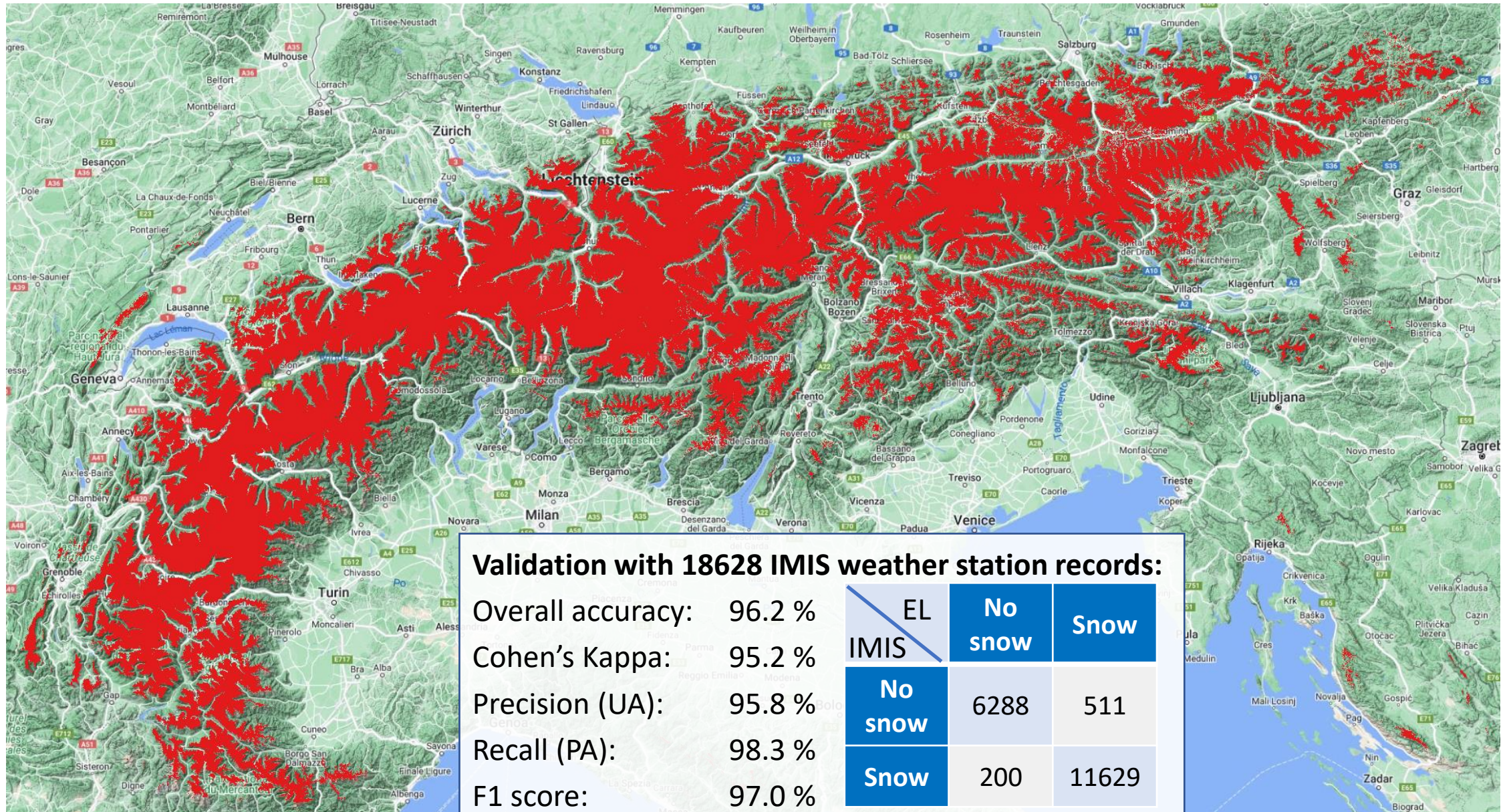
Optical medium-res. (6 Satellites)

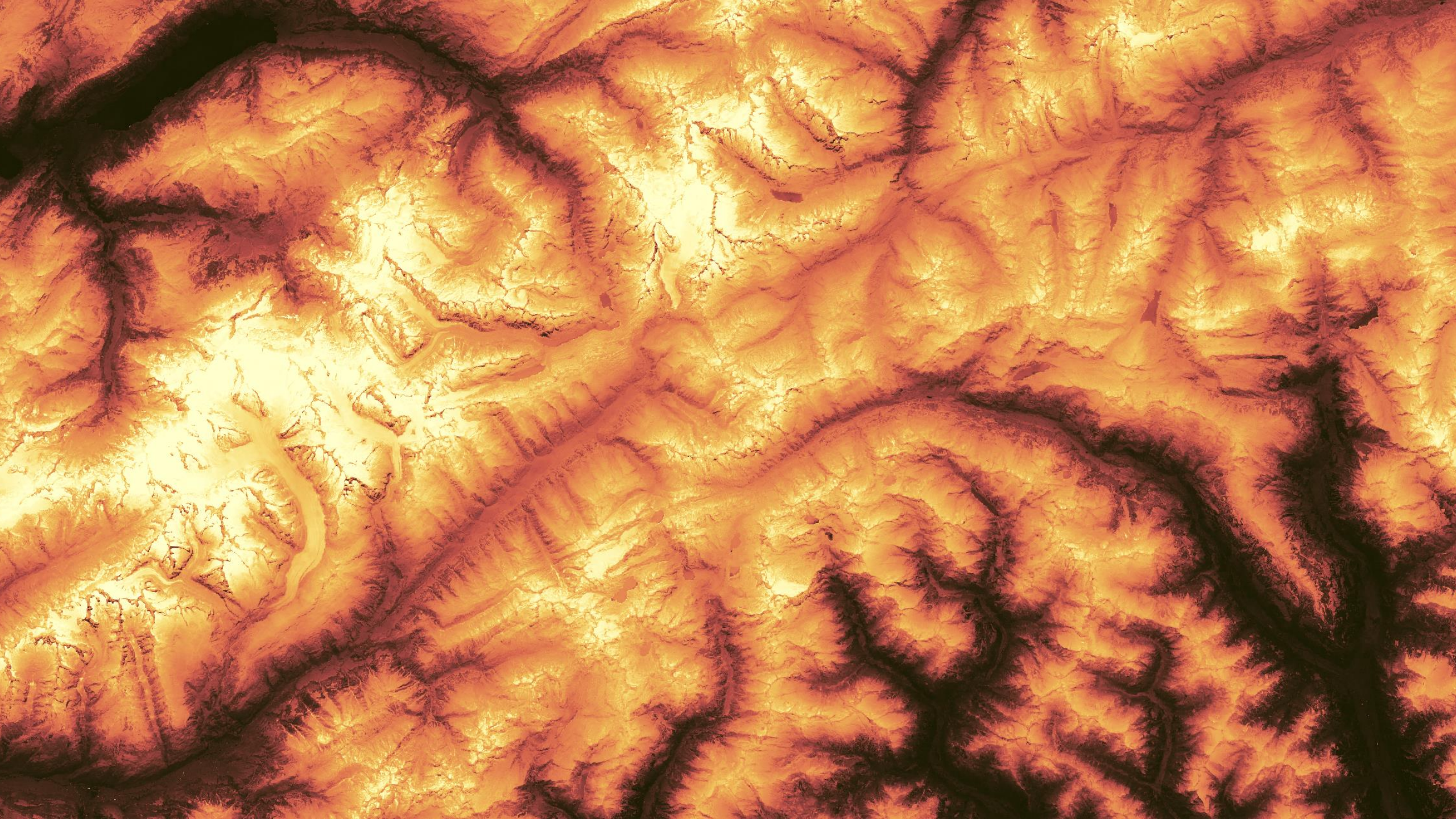
- Sentinel-3 A/B (OLCI + SLSTR)
- *MODIS (Aqua/Terra)*
- VIIRS (SNPP/NOAA20)

Snow Cover - Satellite Image



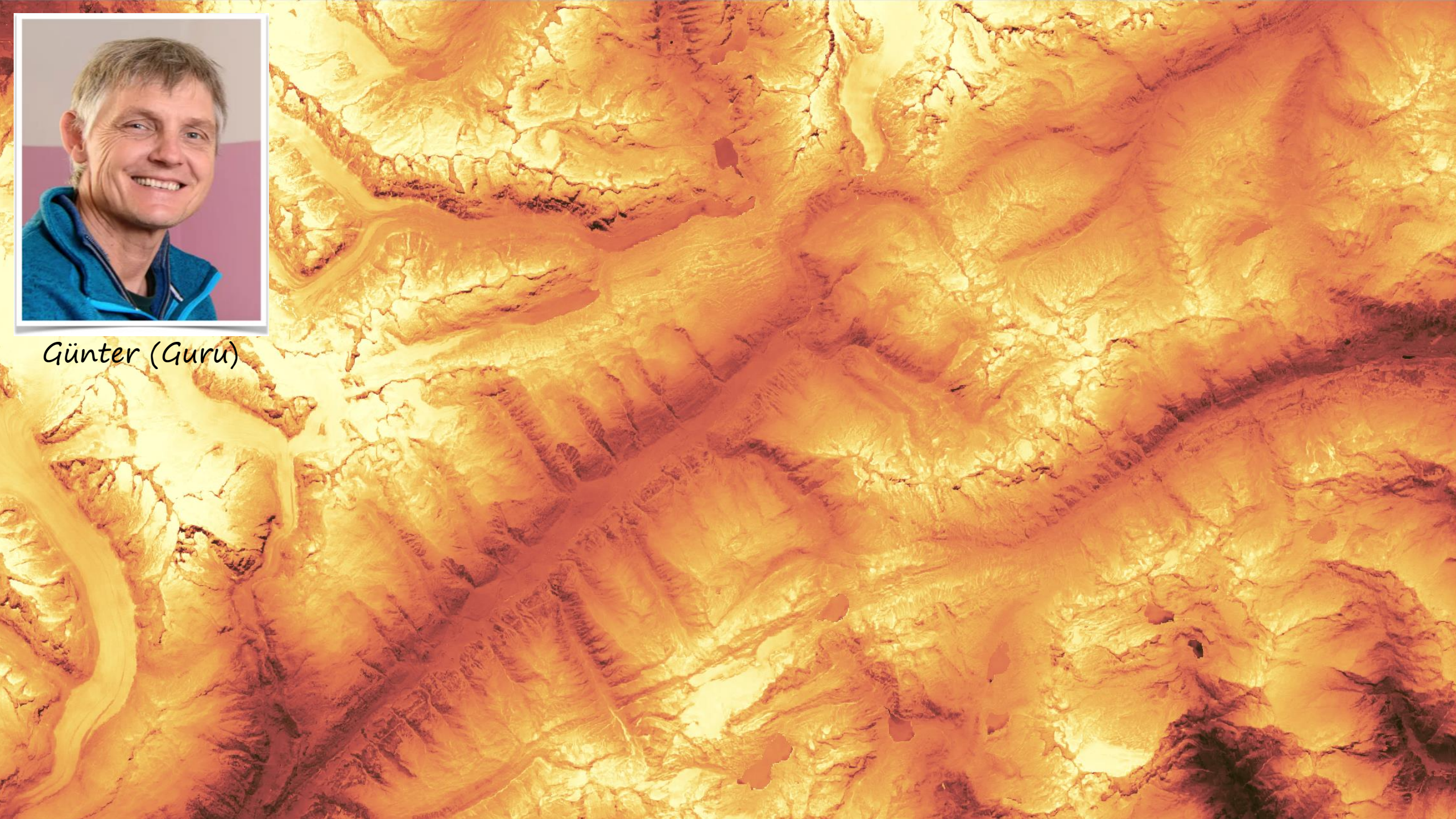
Snow Cover – Product & Validation



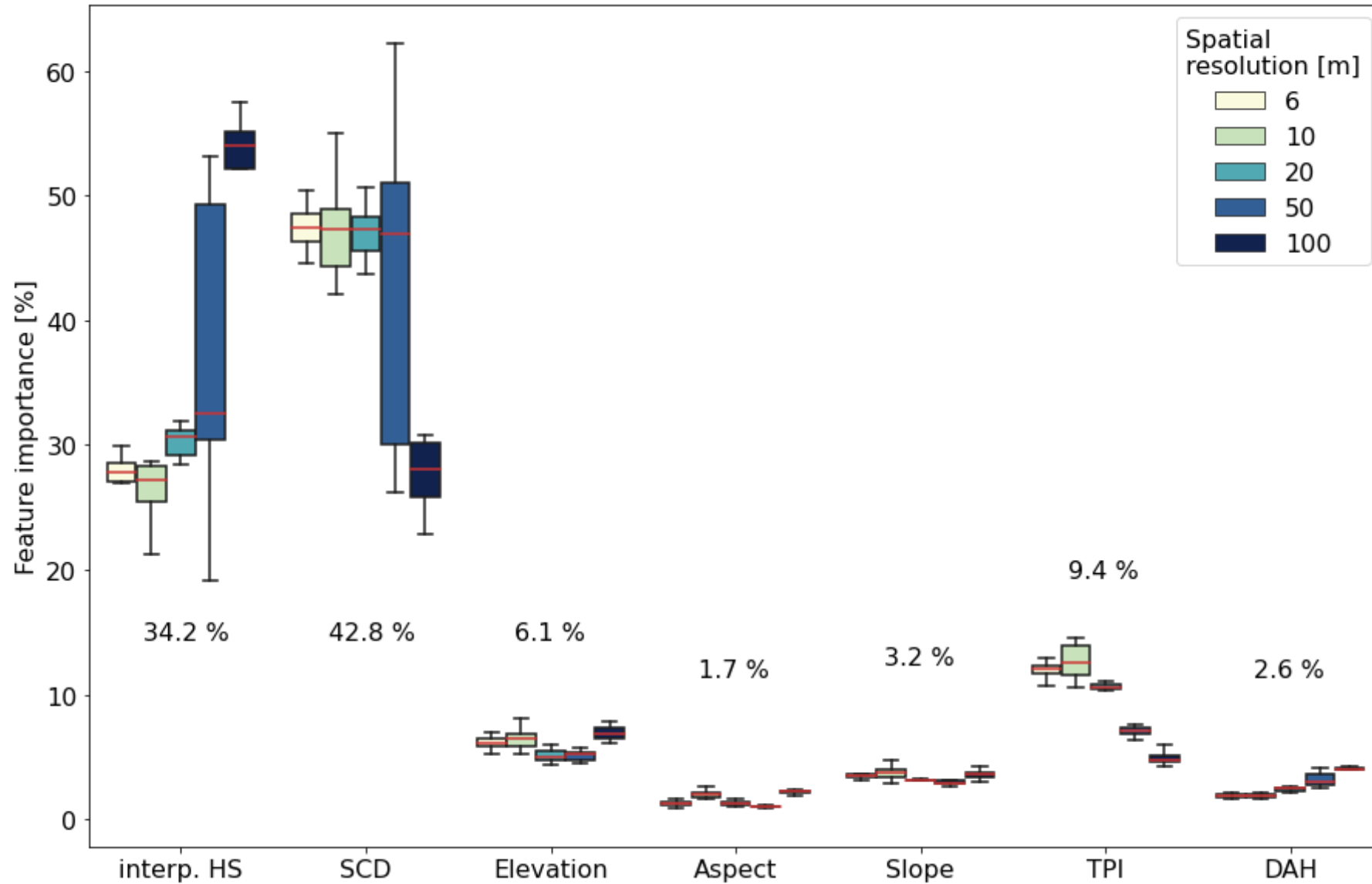




Günter (Guru)

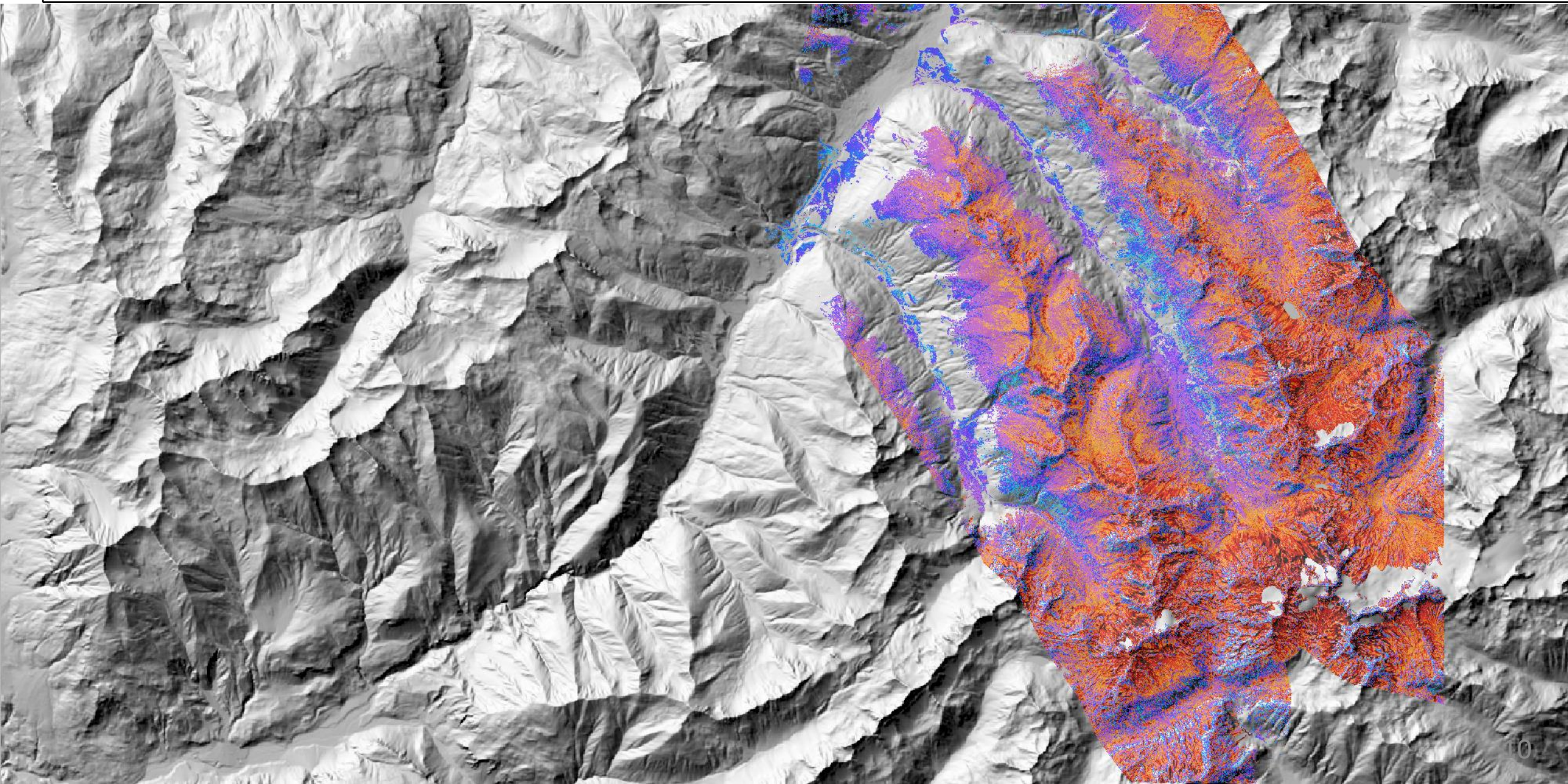
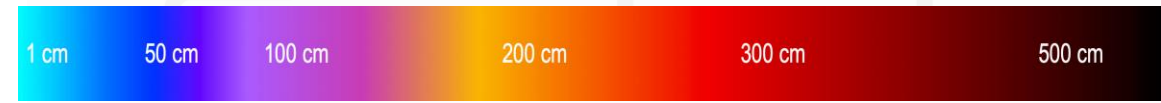


Snow Cover Duration (SCD)



Elena (UZH)

Snow depth - ExoLabs

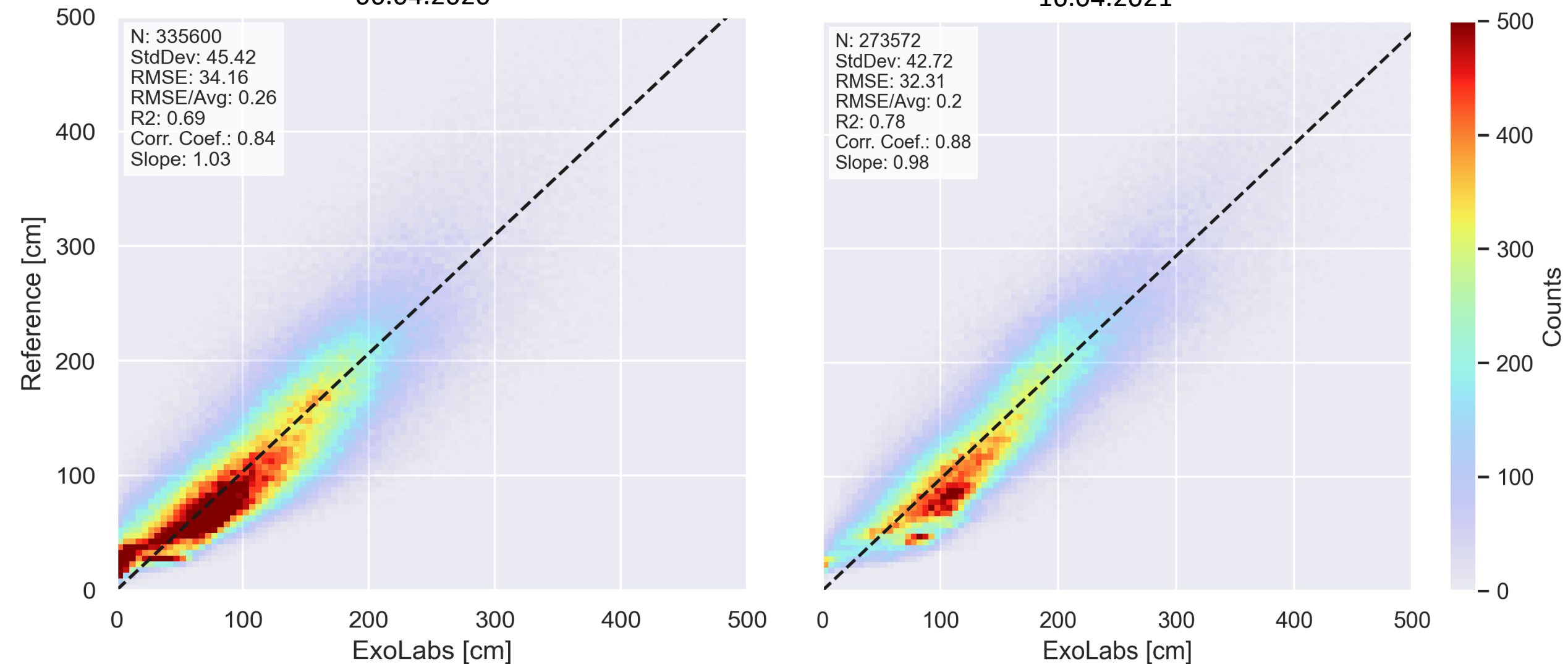


Snow depth - Validation



Validation on a 20 m spatial resolution scale!

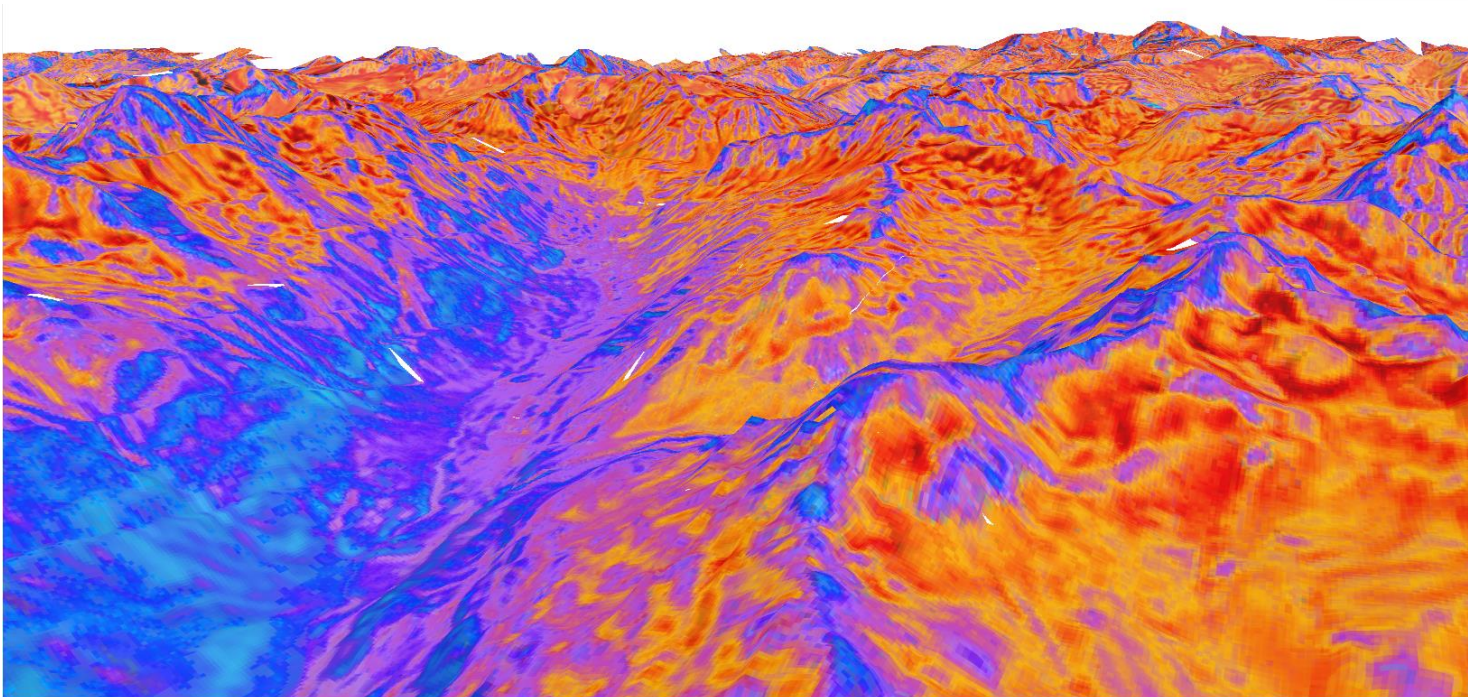
06.04.2020

16.04.2021



Snow depth estimation at country-scale with high spatial and temporal resolution

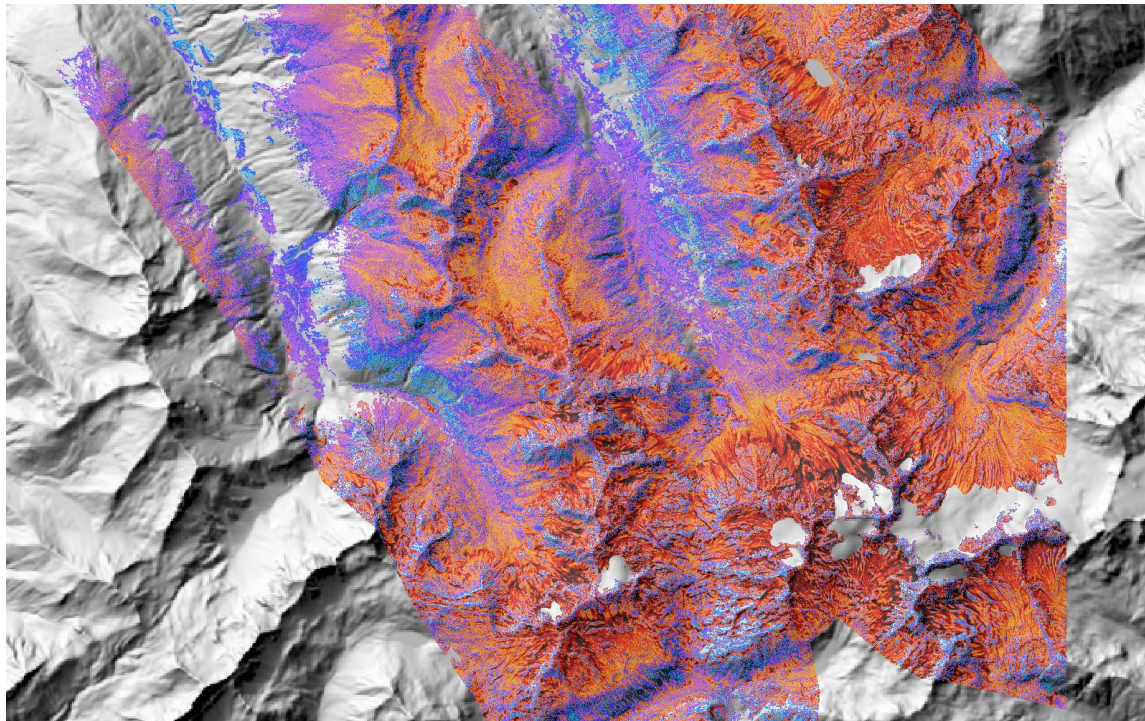
Rodrigo Caye Daudt^a  , Hendrik Wulf^b, Elisabeth D. Hafner^{a, c, d}, Yves Bühler^{c, d},
Konrad Schindler^a, Jan Dirk Wegner^{a, e}



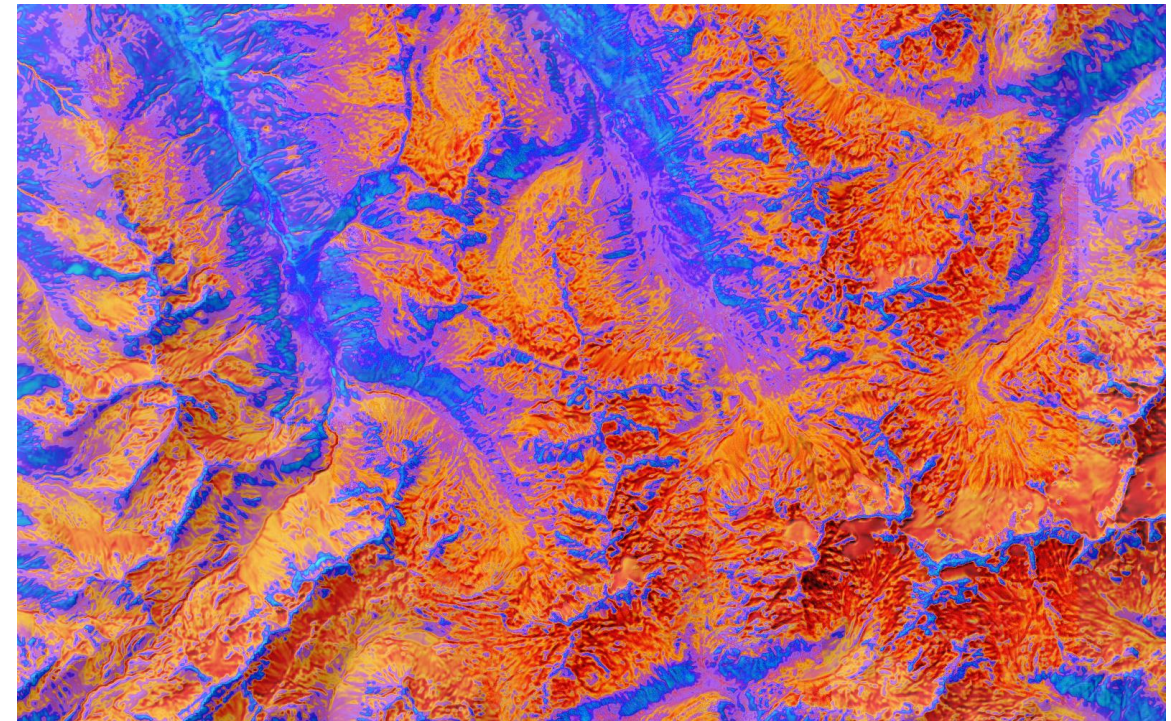
Rodrigo (ETHZ)



Snow Depth - DeepSnow



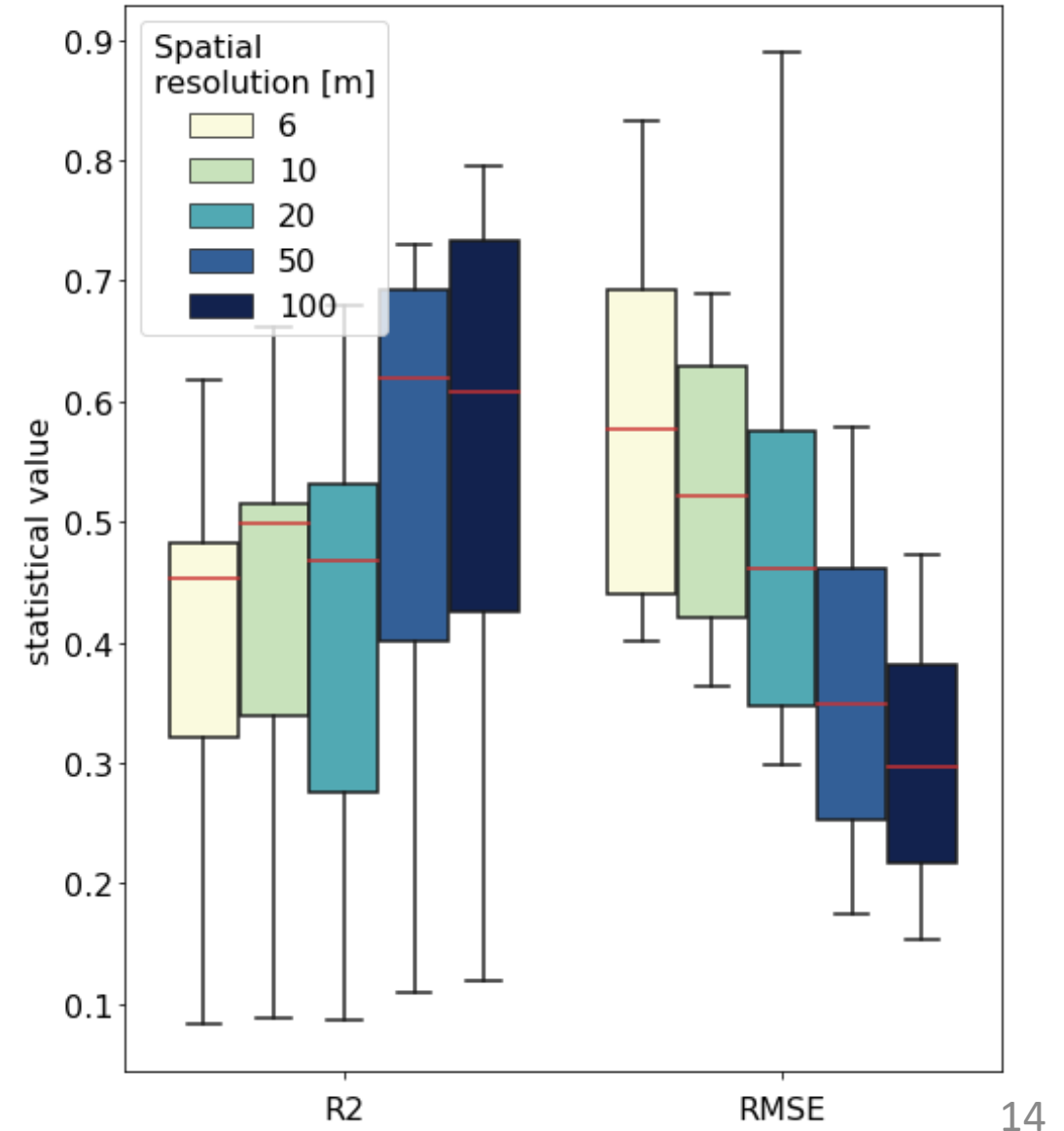
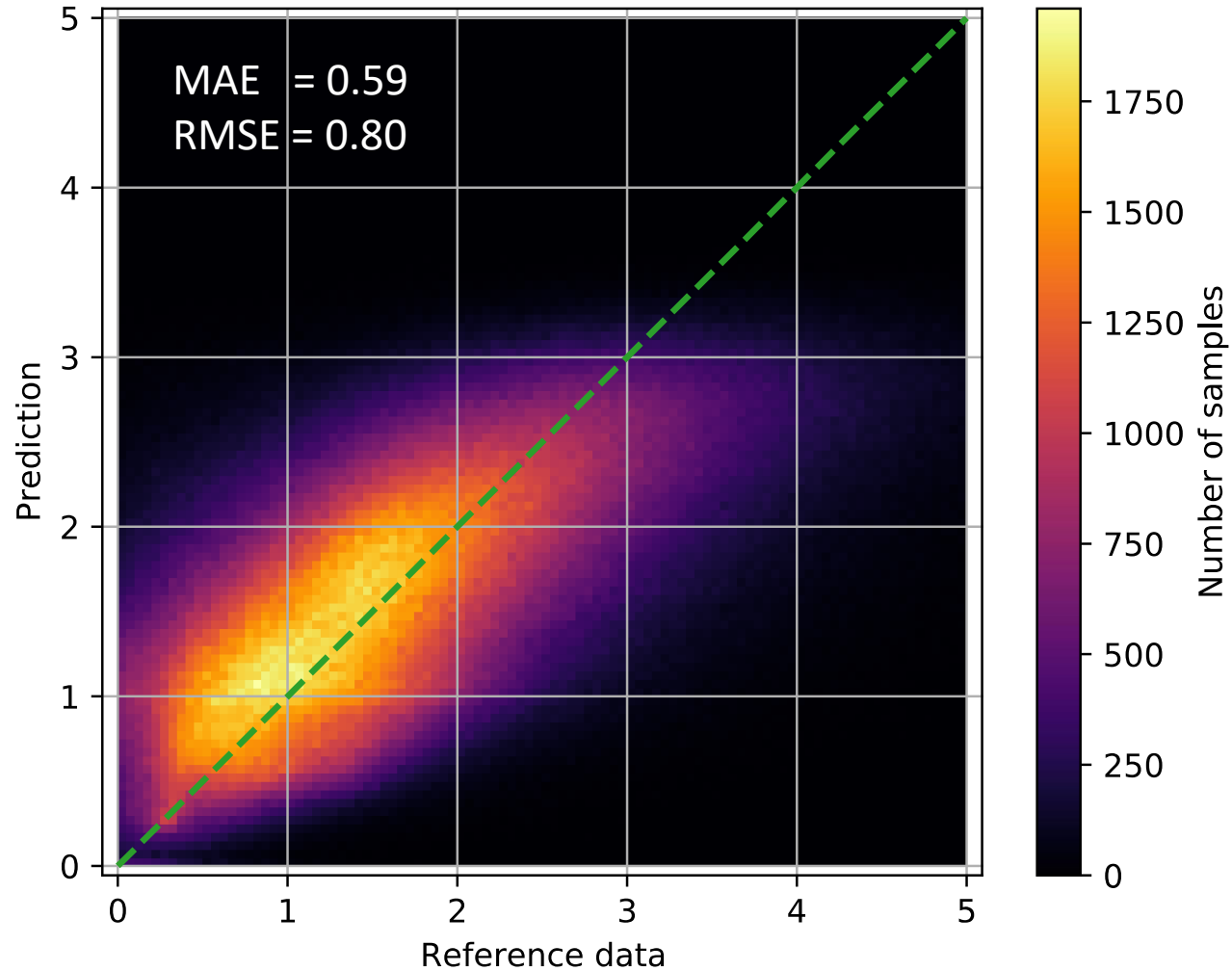
Airborne Reference Data, ©SLF (16.04.2021)



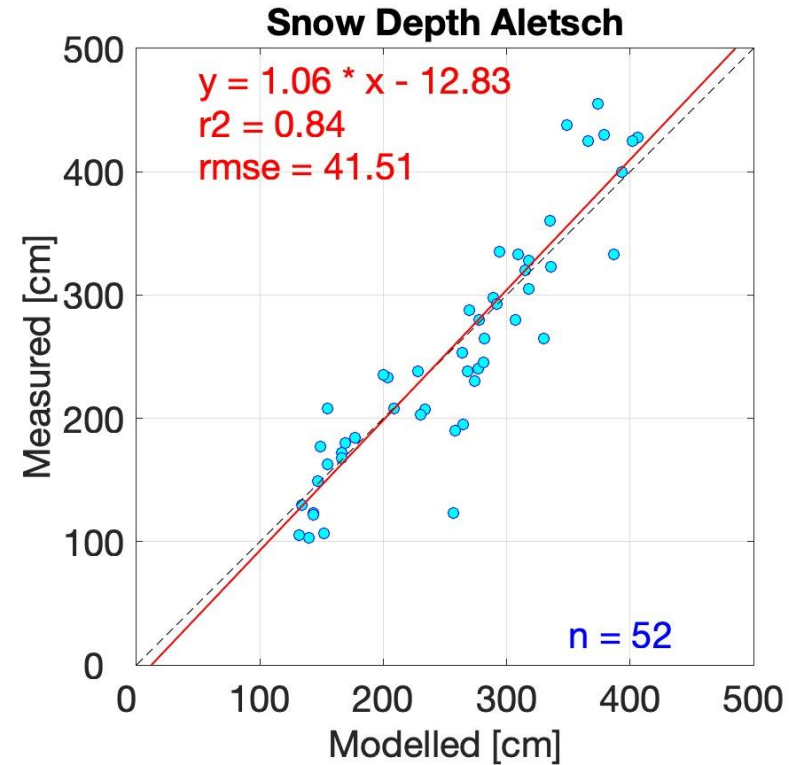
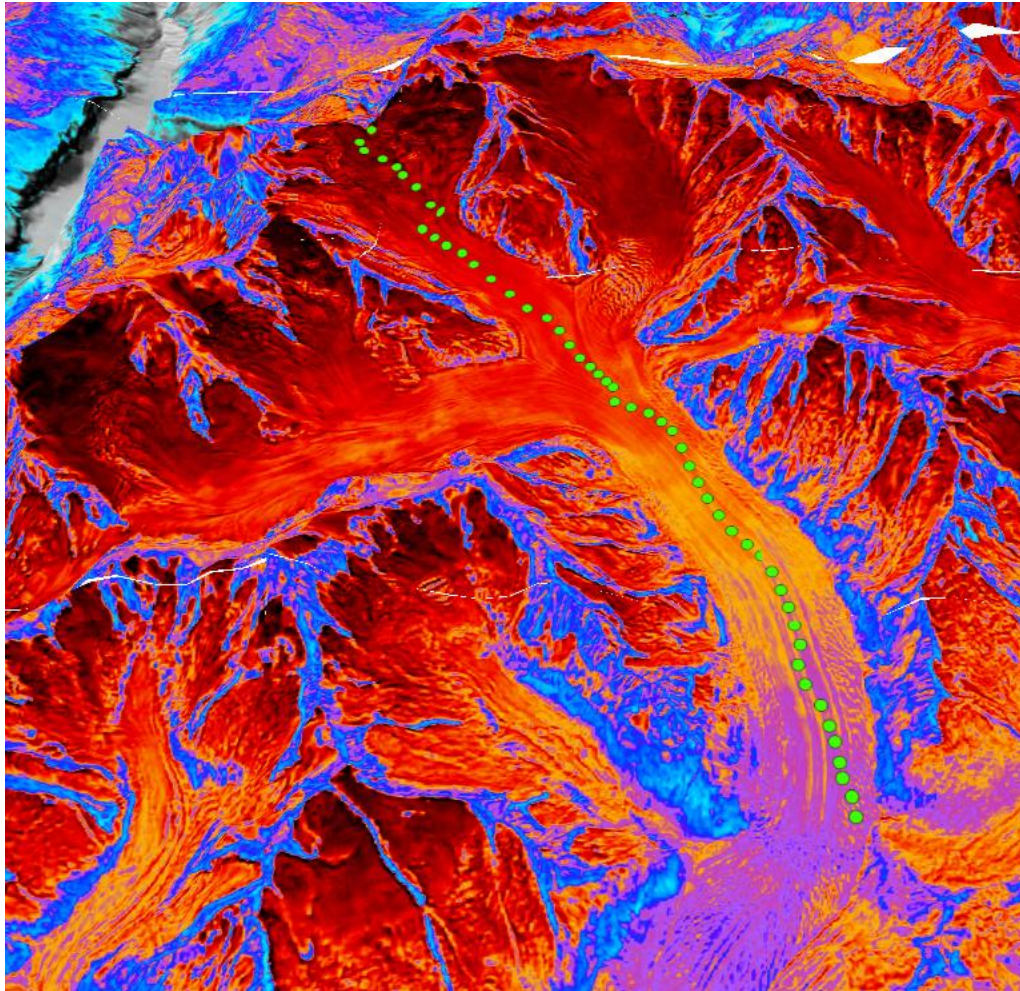
Rodrigo's Snow Depth product (16.04.2021)

Snow depth – Validation 2

Validation on a 10 m spatial resolution scale!



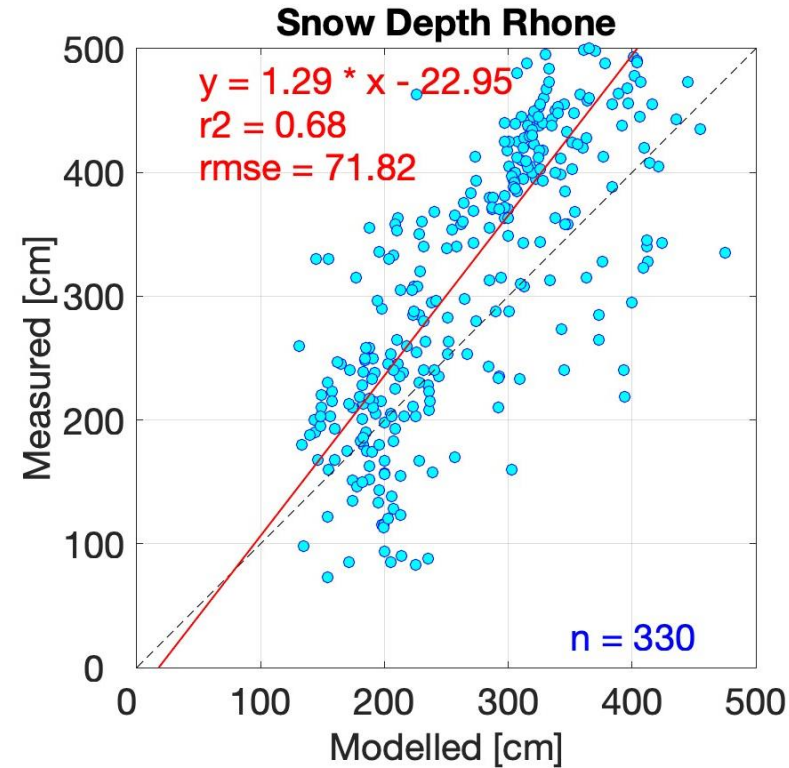
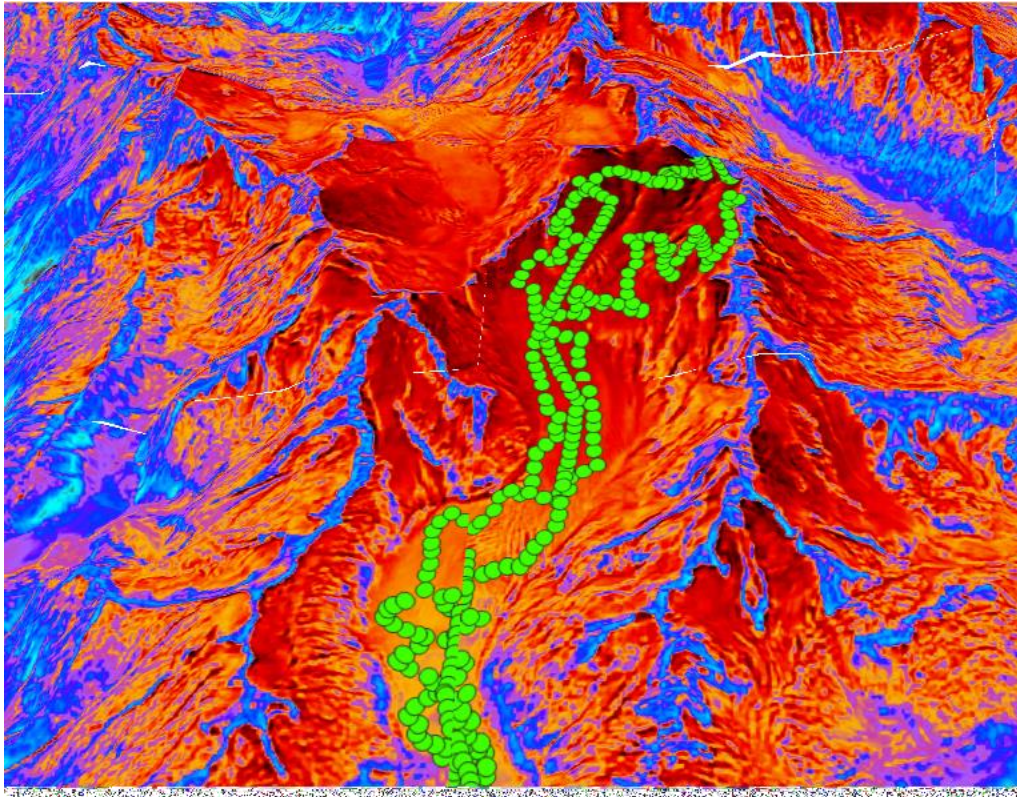
Validation - glacier measurements



Mauro (UniBe)

GLAMOS (2022). Swiss Glacier Mass Balance, release 2021, Glacier Monitoring Switzerland, doi:10.18750/massbalance.2021.r2021.

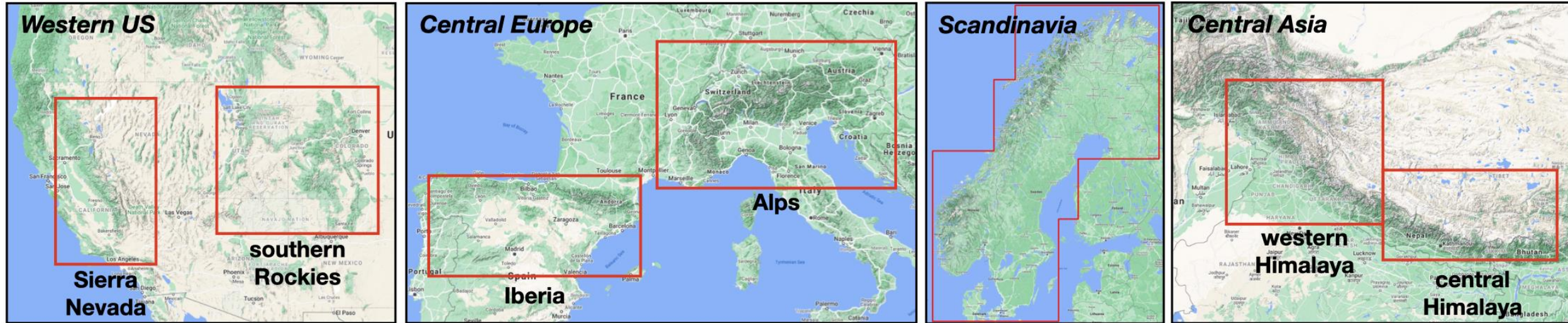
Validation - glacier measurements



Mauro (UniBe)

GLAMOS (2022). Swiss Glacier Mass Balance, release 2021, Glacier Monitoring Switzerland, doi:10.18750/massbalance.2021.r2021.

Service coverage



We are operating in a scalable cloud-based environment.

We can transfer our snow services also to your area of interest.

Open to collaboration

ExoLabs

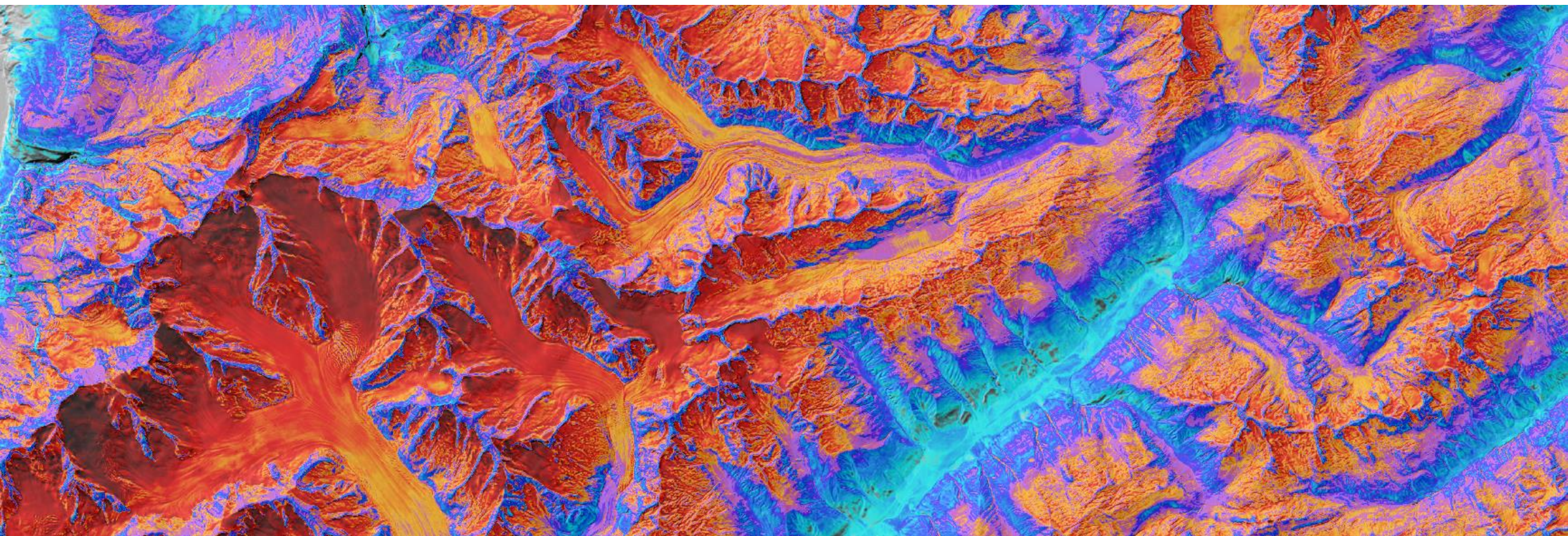
- ✓ **Innovative** snow products from a spin-off of the University of Zurich
- ✓ **Experienced** in research collaboration with renowned research institutions (e.g. SLF, ETH, ESA)
- ✓ **Trusted and integrated** by outdoor experts
(e.g. Swiss Alpine Club, SwissTopo, Outdooractive, FATMAP, Skitouren guru, Gipfelbuch)



ExoLabs

Thank you for your attention!

ExoLabs



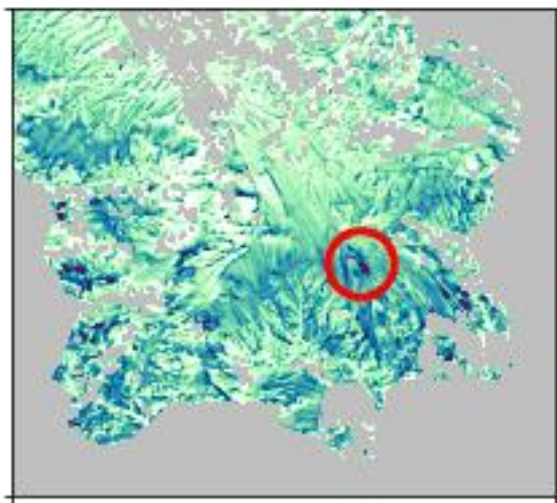
We would love to collaborate with you!



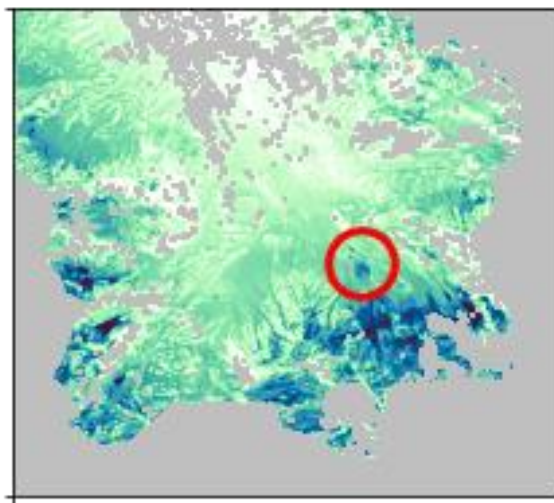
ExoLabs

Resolution matters!

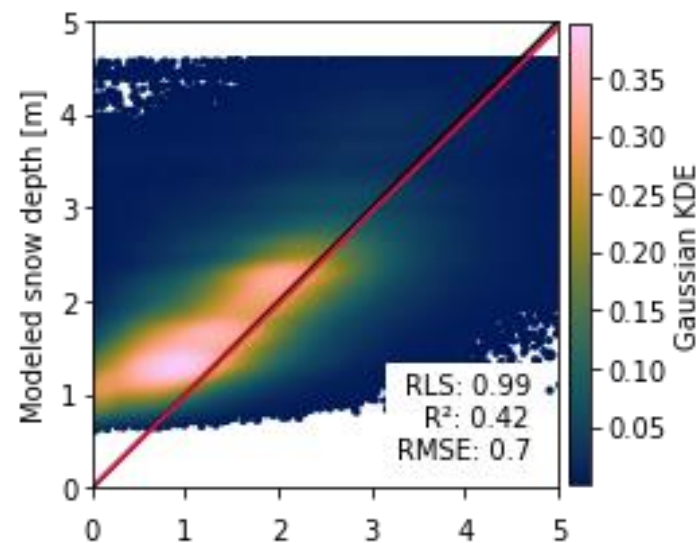
Measured HS, 6m



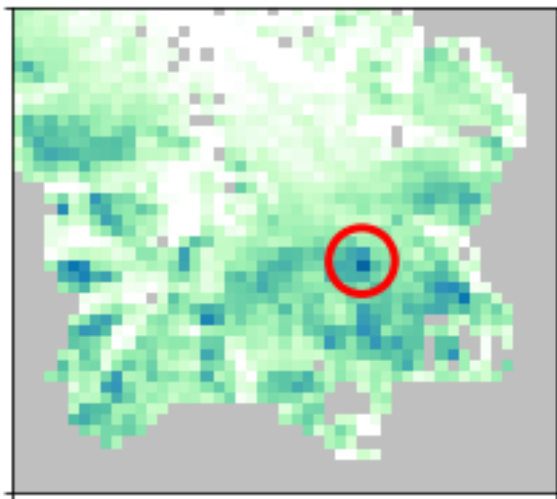
Modeled HS, 6m



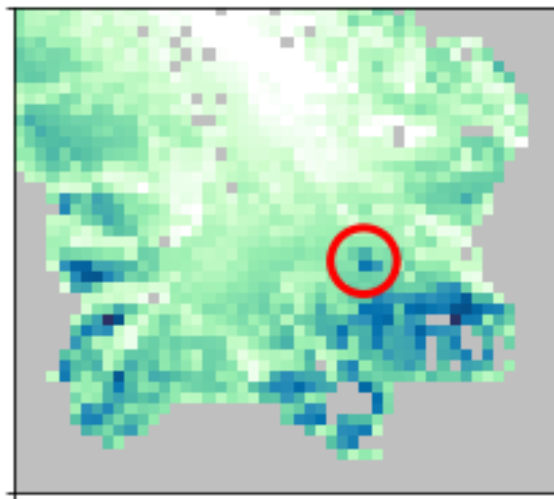
Model accuracy



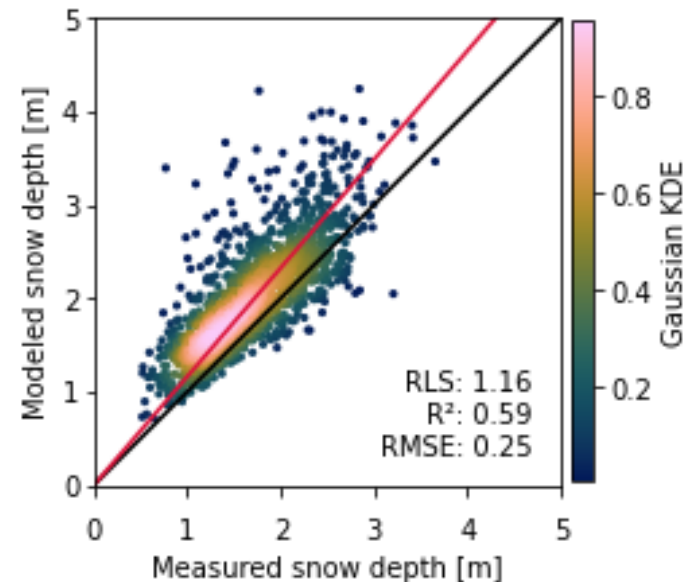
Measured HS, 100m



Modeled HS, 100m

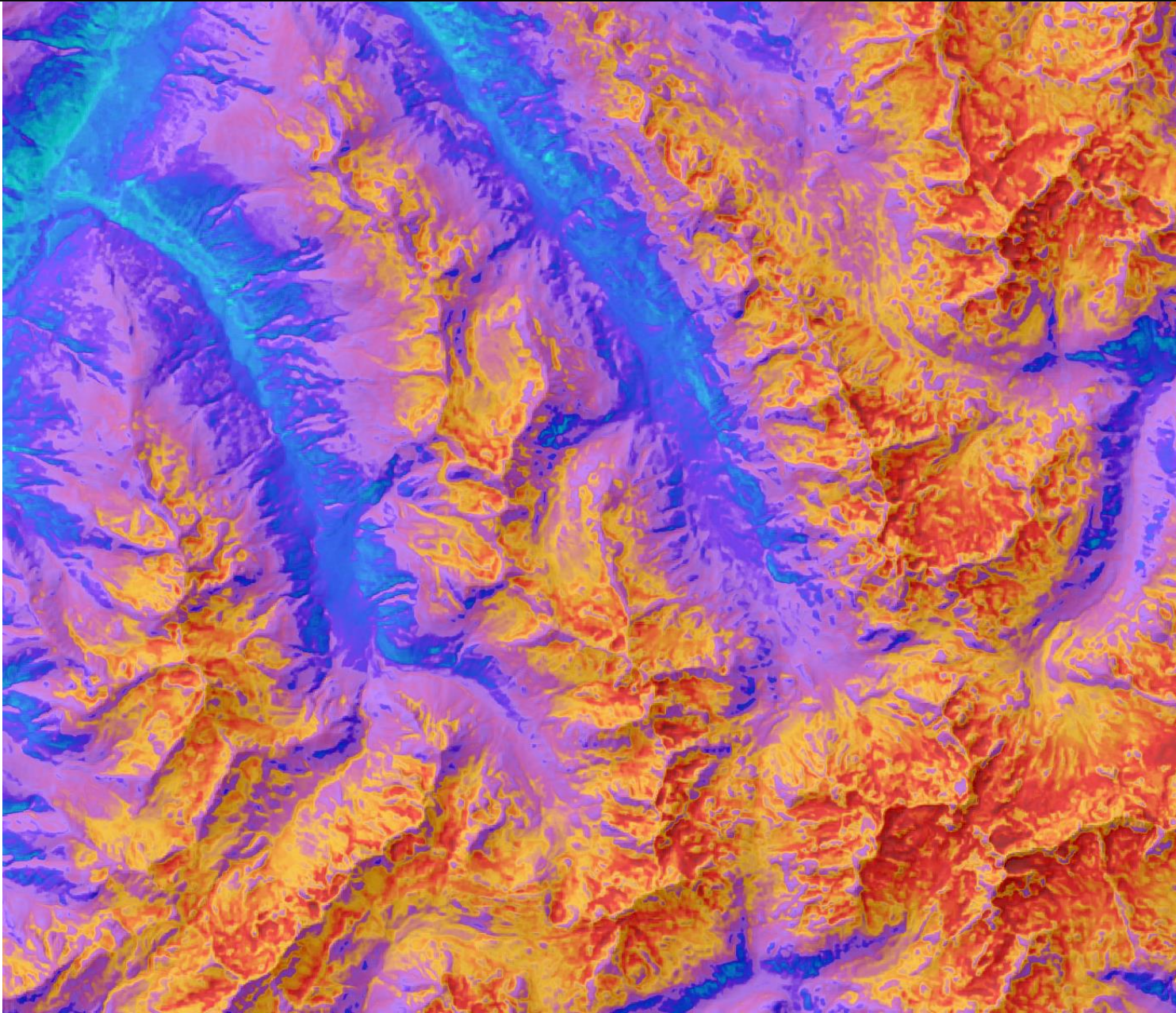


Model accuracy

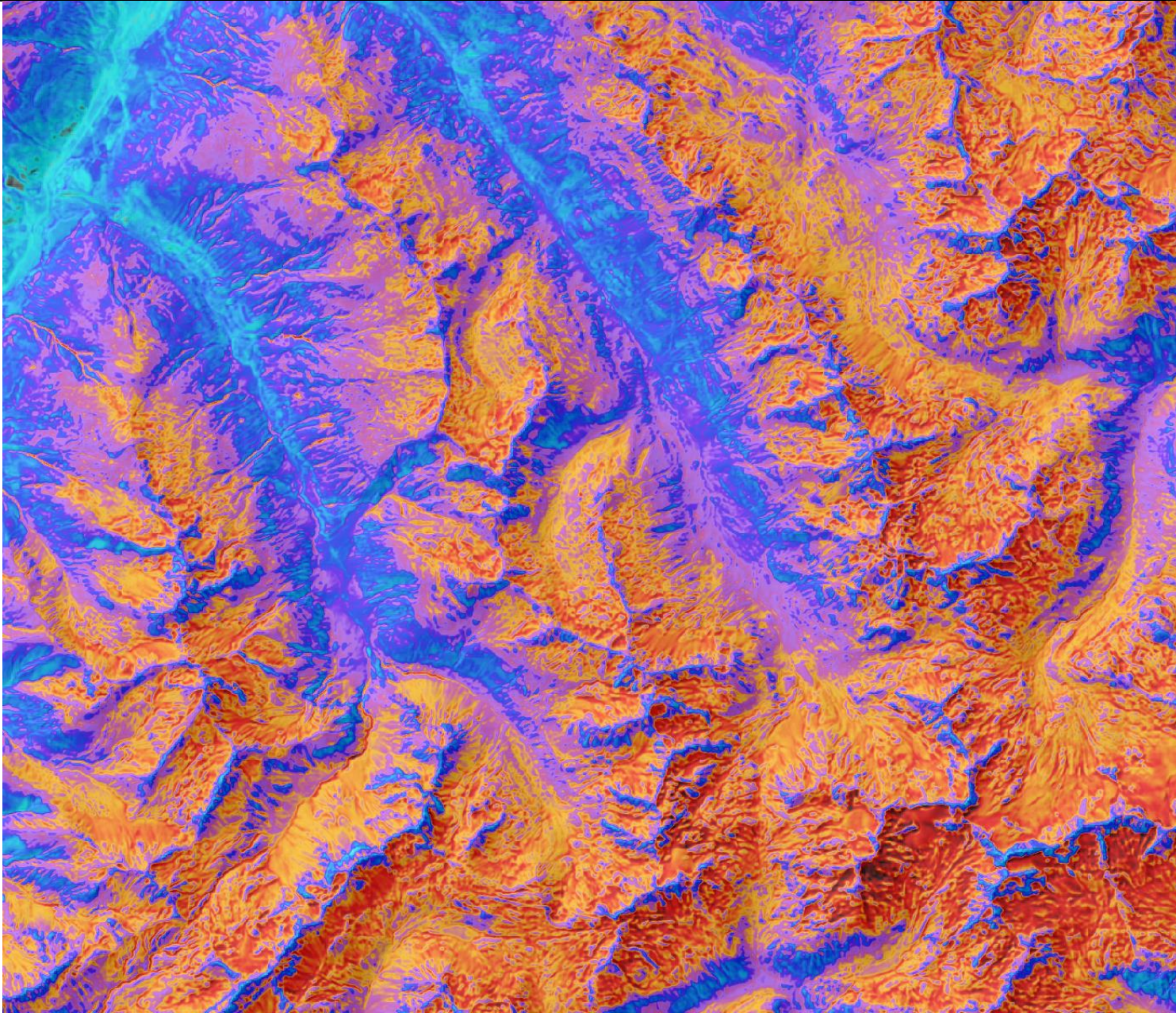


Ultracam vs. ExoLabs

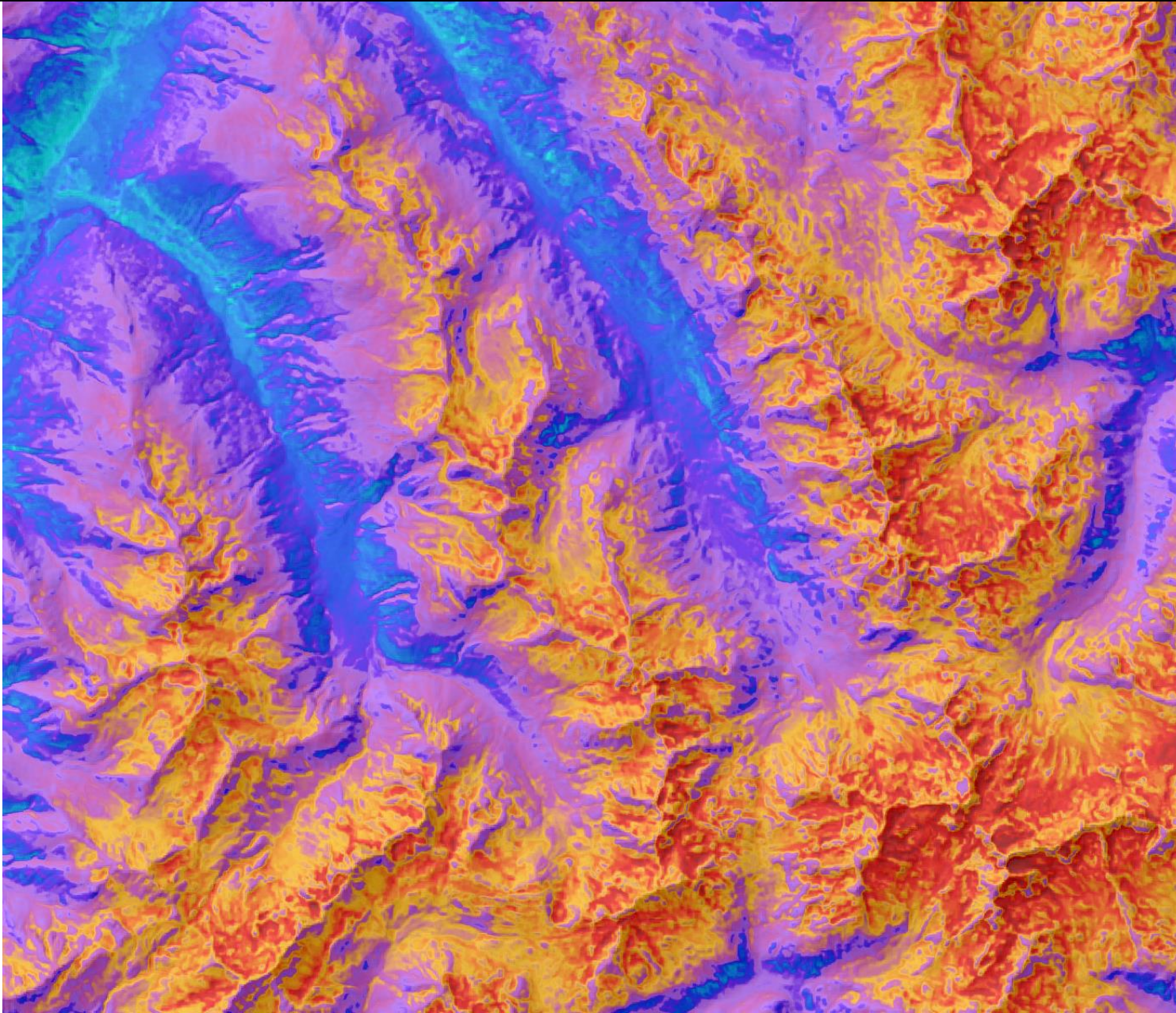
ExoLabs



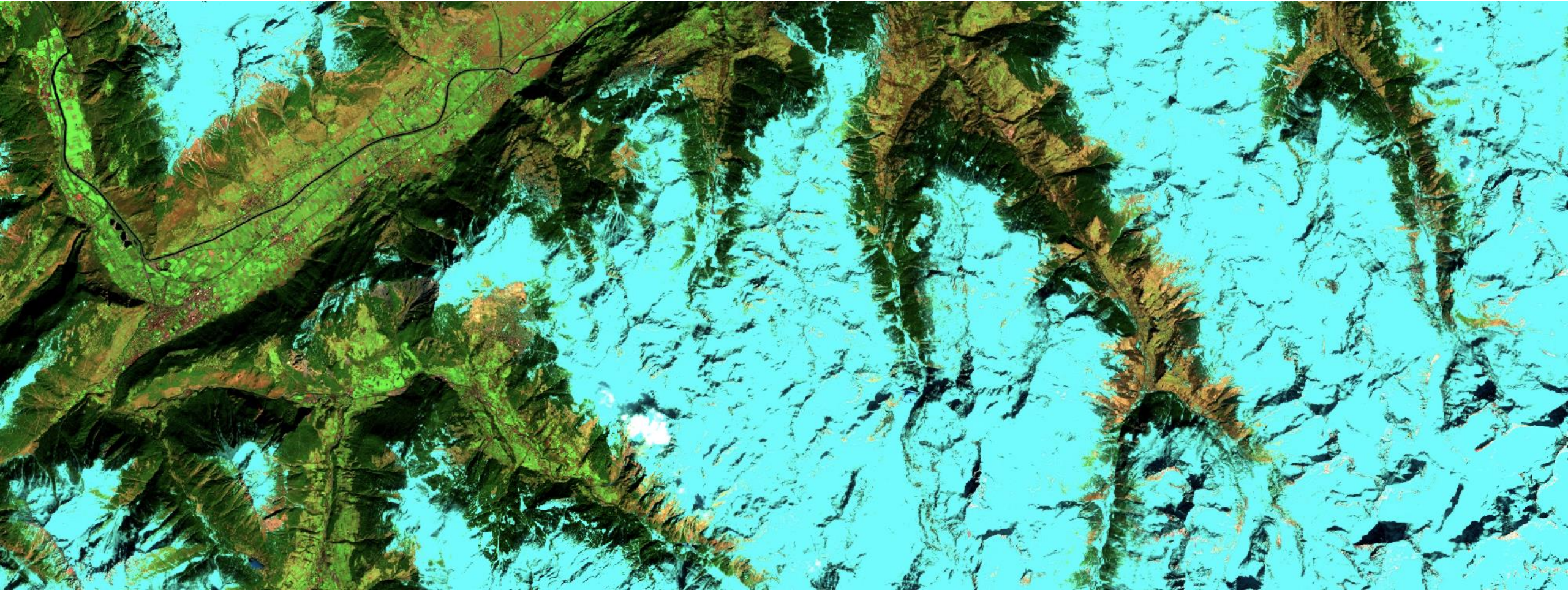
Ultracam vs. DeepSnow



DeepSnow vs. ExoLabs

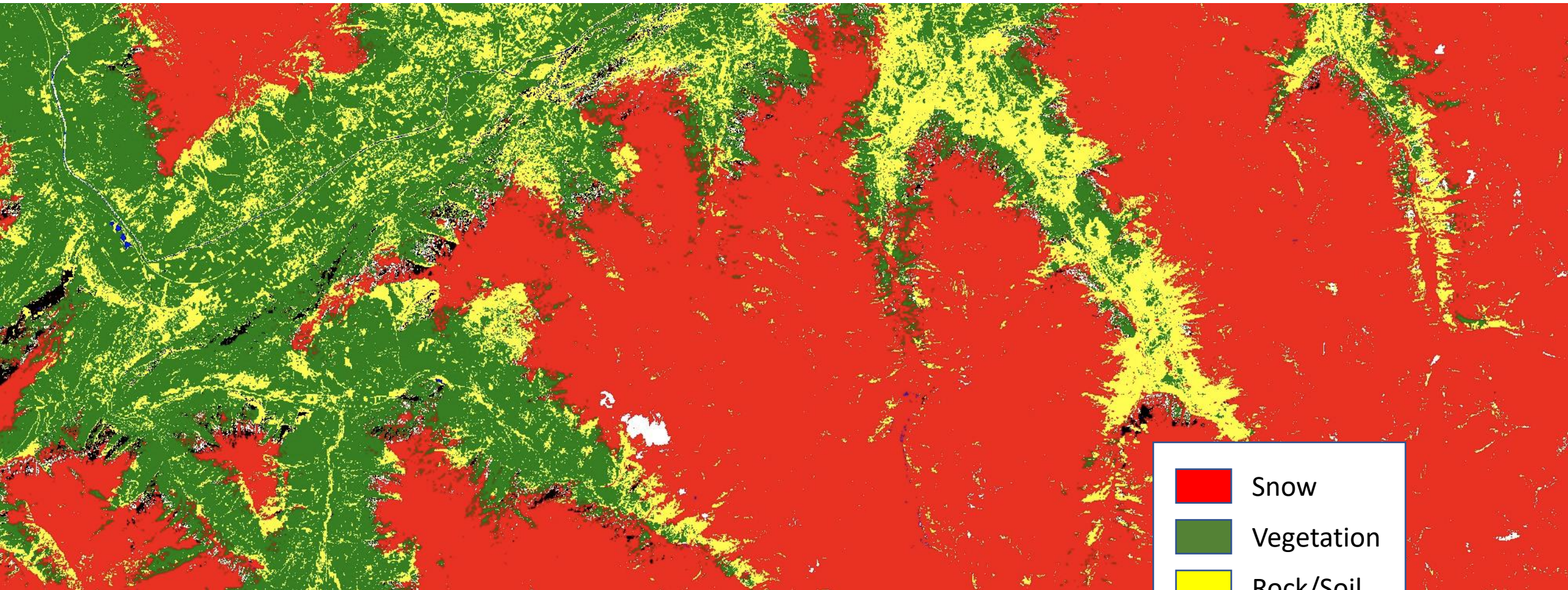


Snow Cover Extent – Satellite Image

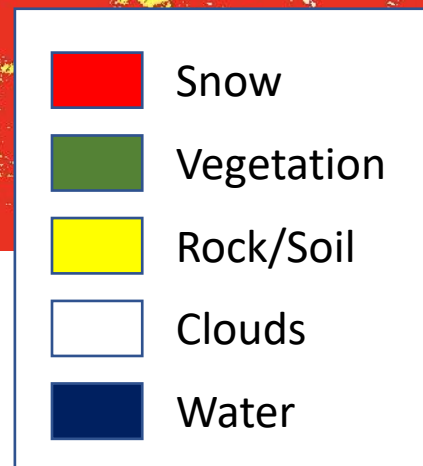


Sentinel-2 false color composite (SWIR2, NIR, red) from 04.04.2021. Snow appears in turquoise colors.

Snow Cover Extent - Classification



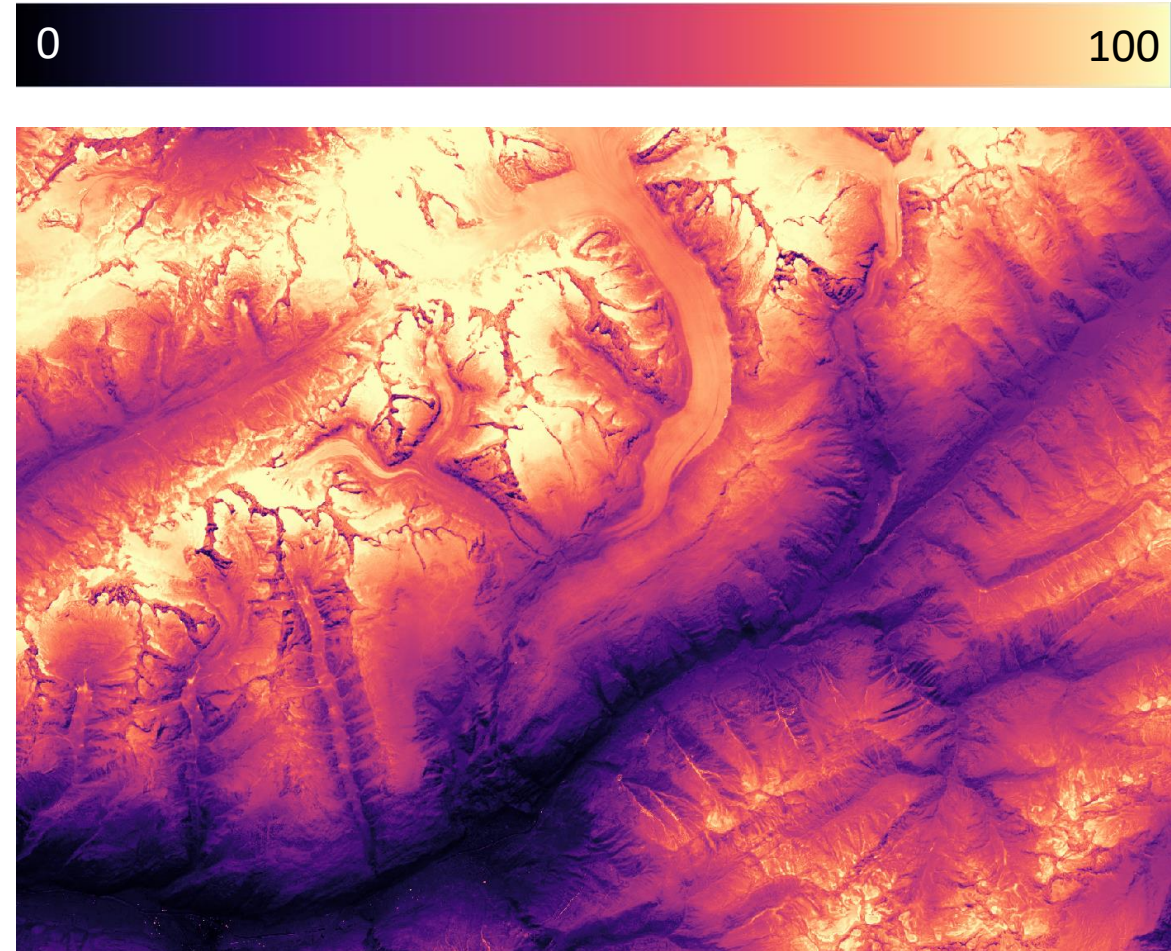
Snow cover extent classification. Snow in forests and shaded areas is very well captured.



Snow Cover Extent - Validation



Aerial Image

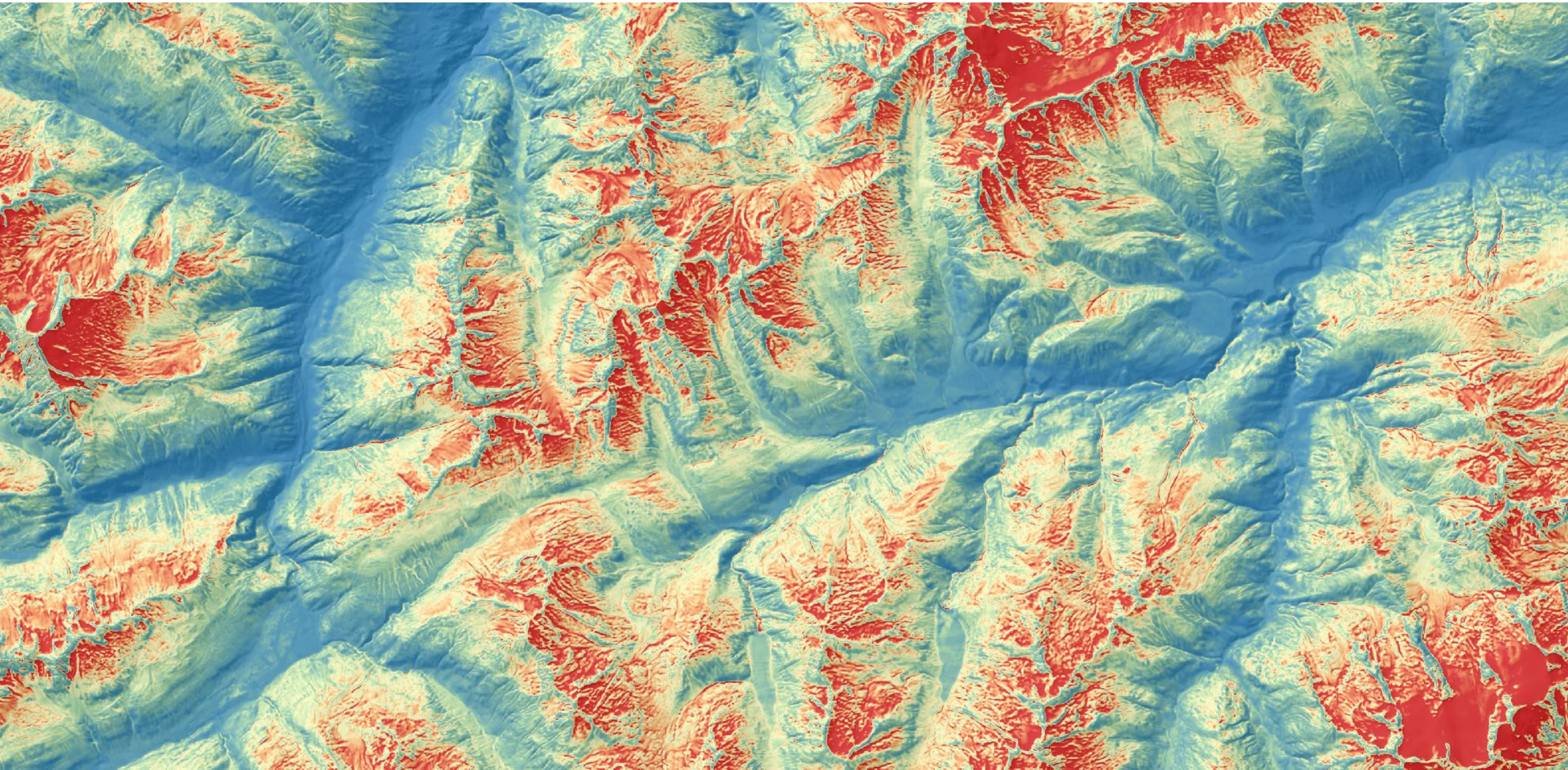


Snow Cover Duration (Sentinel-2, 2016-22)

Snow Water Equivalent

1 kg/m²

800 kg/m²



Snow products

Snow product specifications:

We provide our core products in **real time** with **daily updates** in a **20 m** spatial resolution across global **mountain ranges**.

Core Snow products:



Snow Cover Extent (SCE)



Snow Depth (HS)



Snow Water Equivalent (SWE)

Further snow products



SCE / HS / SWE **forecasts**



Snow surface **temperature**



Snow **albedo**



Snow cover **trends**

1) Snow products

- *Holistic* – Combining all relevant space and ground measurements
- *Innovative* – Applying machine learning methods & geostatistical models
- *Scalable* – Providing best-quality snow products for any area of interest

2) Snow services

- *Reliable* – Exploiting AWS Cloud computing for secure snow services
- *User friendly* – Easy and documented data uptake via API

Additional data streams

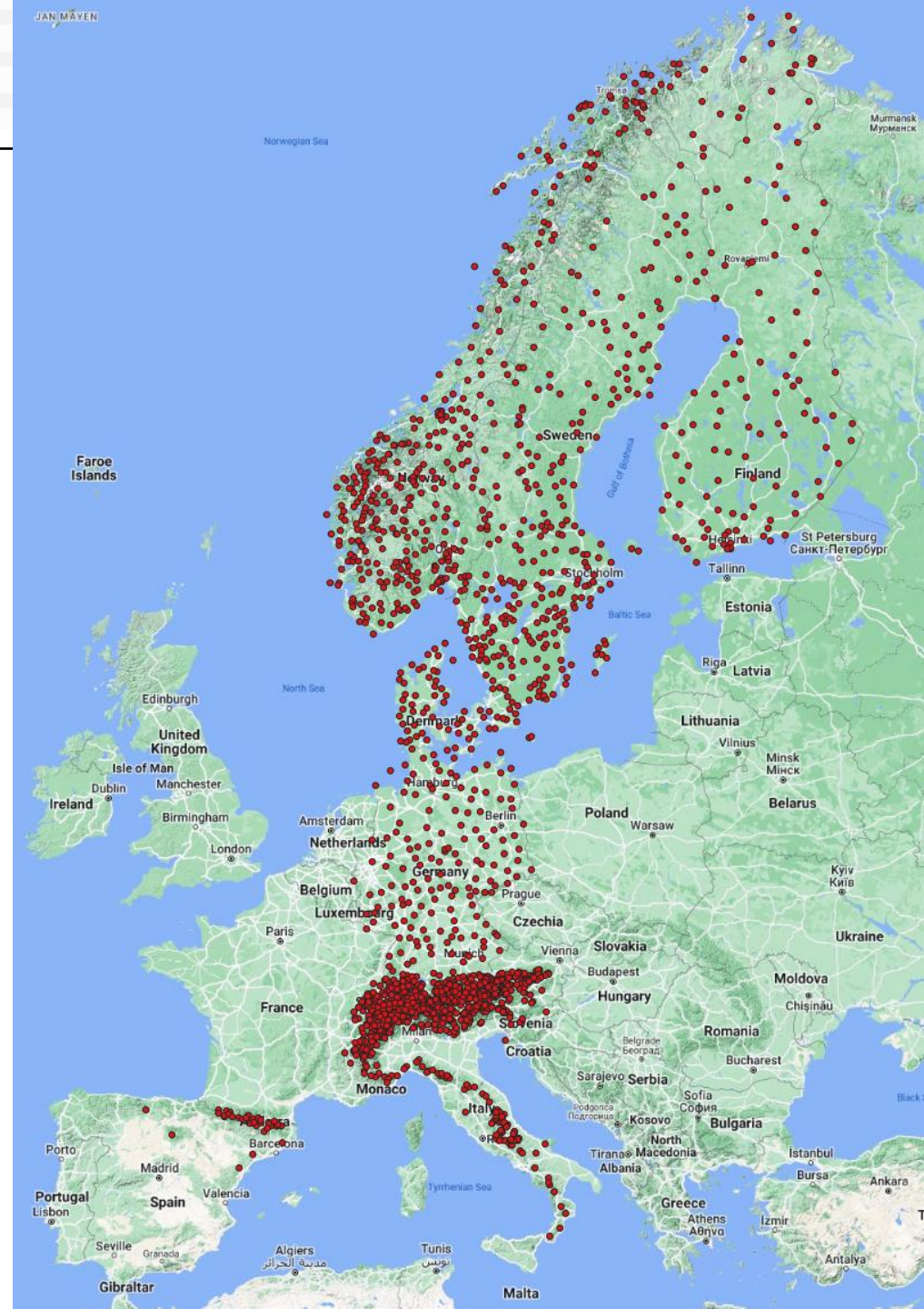
In-situ measurements (>2000 in Europe)

Meteorological forecasts

Climatology data

Land cover

Elevation



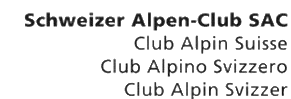
Earth Observation service provider

Spin-Off from the University of Zurich

Near real-time environmental monitoring



Partners and References



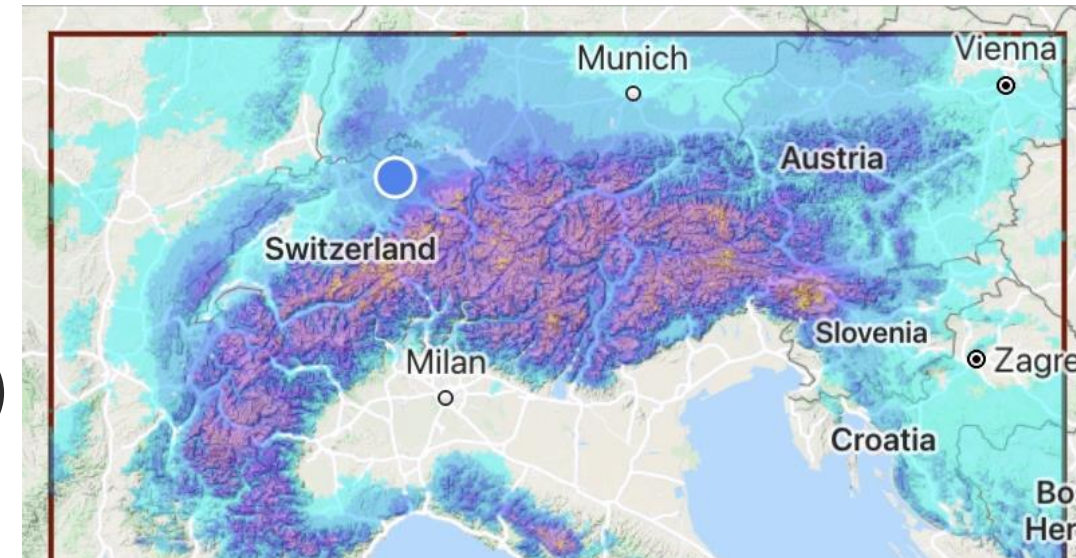
Snow Monitoring Innovations

Snow products

- Snow cover, snow depth, snow water (SWE)
- High spatial (20 m) & temporal (daily) resolution
- Large spatial extent (e.g. Alps) without data gaps
- Full value chain (observations, models, forecasts)
- Transferable to any area of interest (global)

Snow service

- Fully operational on AWS (reliable & secure)
- Documented data services via API (user-friendly)

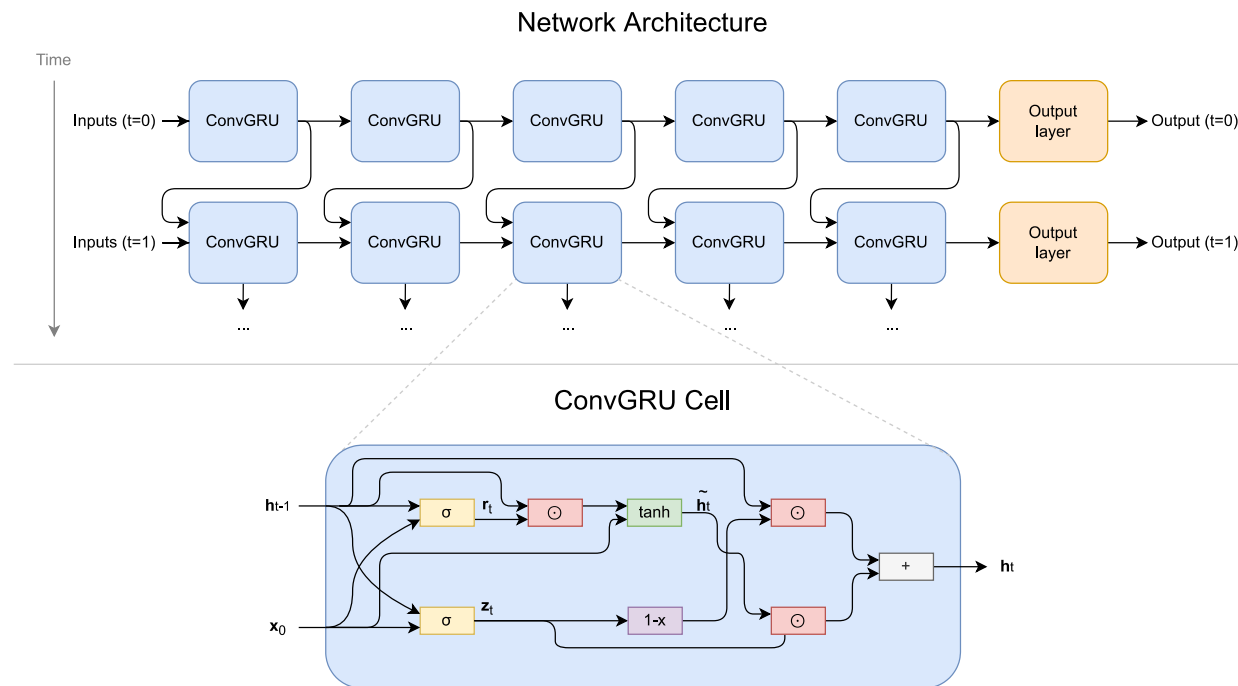


Snow Depth Estimation at Country-Scale with High Spatial and Temporal Resolution

Rodrigo Caye Daudt^{a,*}, Hendrik Wulf^b, Elisabeth D. Hafner^{a,c,d}, Yves Bühler^{c,d}, Konrad Schindler^a, Jan Dirk Wegner^{a,e}



Rodrigo (ETHZ)



Innosuisse - Swiss Innovation Agency



Schweizerische Eidgenossenschaft
Confédération suisse
Confederazione Svizzera
Confederaziun svizra